

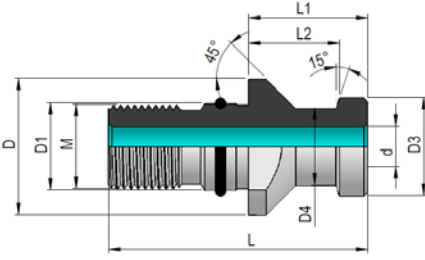
Pull Stud

DIN 69872

Form
A

Anzugsbolzen

Çektirme Civatası



Order No. Bestell-Nr. Sipariş No.	Description Bezeichnung Açıklama	D	D1	D3	D4	L	L1	L2	M	d
140.20.101	SK40 DIN69872-A M16	23	17	19	14	54	26	20	M16	7
150.20.101	SK50 DIN69872-A M24	36	25	28	21	74	34	25	M24	11,5
140.20.115	MAS BT40 OKUMA M16	23	17	19	14	54	29	23	M16	7
⊛ 140.20.120	MAS BT40 MORISEIKI M16	23	17	19	14	54	29	23	M16	7

- ⊛ Internal O-Ring
Innen liegender O-Ring
Delikli O-Ringli

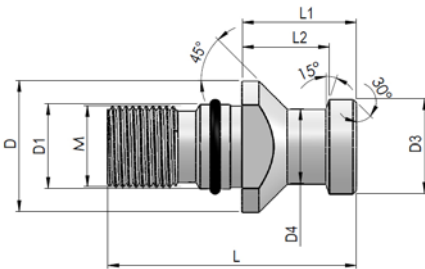
Pull Stud

DIN 69872

Form
B

Anzugsbolzen

Çektirme Civatası

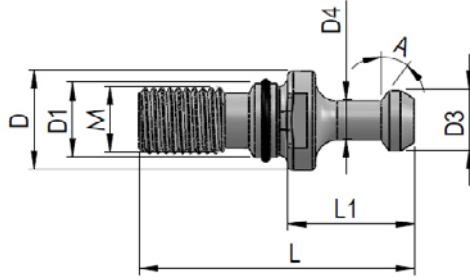


Order No. Bestell-Nr. Sipariş No.	Description Bezeichnung Açıklama	D	D1	D3	D4	L	L1	L2	M
140.20.111	SK40 DIN69872-B M16	23	17	19	14	54	26	20	M16
150.20.111	SK50 DIN69872-B M24	36	25	28	21	74	34	25	M24

Pull Stud

MAS 403 BT

Anzugsbolzen
Çektirme Civatası

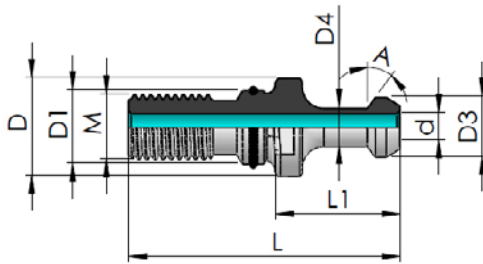


Order No. Bestell-Nr. Sipariş No.	Description Bezeichnung Açıklama	D	D1	D3	D4	L	L1	A	M
330.20.101	BT30 M12 30°	16,5	12,5	11	7	43	23	30°	M12
330.20.102	BT30 M12 45°	16,5	12,5	11	7	43	23	45°	M12
340.20.101	BT40 M16 30°	23	17	15	10	60	35	30°	M16
340.20.102	BT40 M16 45°	23	17	15	10	60	35	45°	M16
340.20.103	BT40 M16 90°	23	17	15	10	60	35	90°	M16
350.20.101	BT50 M24 30°	38	25	23	17	85	45	30°	M24
350.20.102	BT50 M24 45°	38	25	23	17	85	45	45°	M24
350.20.103	BT50 M24 90°	38	25	23	17	85	45	90°	M24

Pull Stud

MAS 403 BT

Anzugsbolzen
Çektirme Civatası



Order No. Bestell-Nr. Sipariş No.	Description Bezeichnung Açıklama	D	D1	D3	D4	L	L1	A	M	d
340.20.111	BT40 M16 30°	23	17	15	10	60	35	30°	M16	3
340.20.112	BT40 M16 45°	23	17	15	10	60	35	45°	M16	3
340.20.113	BT40 M16 90°	23	17	15	10	60	35	90°	M16	3
350.20.111	BT50 M24 30°	38	25	23	17	85	45	30°	M24	6
350.20.112	BT50 M24 45°	38	25	23	17	85	45	45°	M24	6
350.20.113	BT50 M24 90°	38	25	23	17	85	45	90°	M24	6

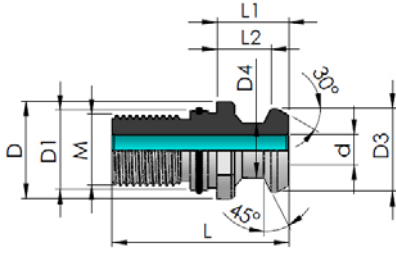
Pull Stud

ANSI-CAT MAZAK



Anzugsbolzen

Çektirme Civatası



Order No. Bestell-Nr. Sipariş No.	Description Bezeichnung Açıklama	D	D1	D3	D4	L	L1	L2	M	d
440.20.101	ANSI-CAT MAZAK M16	22	17	18,79	12,5	41,25	16,25	11,17	M16	7
450.20.101	ANSI-CAT MAZAK M24	35,6	25	28,95	20,82	65,4	25,4	17,78	M24	10
440.20.115	MAS BT40 MAZAK M16	22	17	18,79	12,44	44,10	19,10	14,10	M16	7

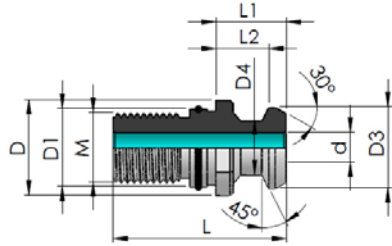
Pull Stud

ISO 7388-B



Anzugsbolzen

Çektirme Civatası



Order No. Bestell-Nr. Sipariş No.	Description Bezeichnung Açıklama	D	D1	D3	D4	L	L1	L2	M	d
440.20.111	ISO 7388-B M16	22,5	17	18,9	12,9	44,5	16,4	11,1	M16	7,3
450.20.111	ISO 7388-B M24	37	25	29,1	19,6	65,5	25,5	17,9	M24	11,5