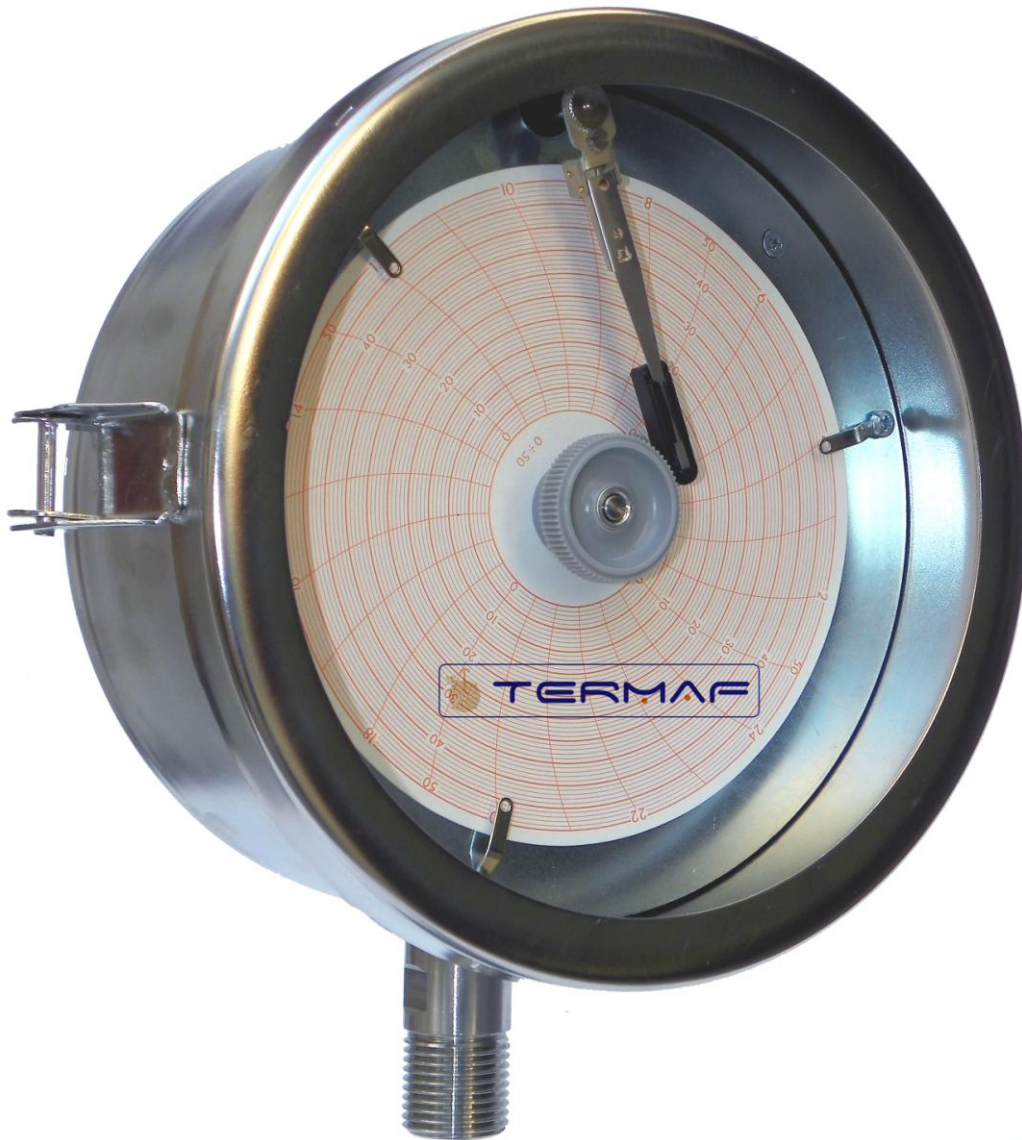


圆形图表压力及温度记录仪 RP/A1 DS 200 – DS 160

概述

These instruments are designed for cyclical process records or process controls in food, petrochemical, chemical and pharmaceutical industries. The RP series are studied for withstanding to the most adverse process conditions that might happen due to the aggressiveness of the measured fluid and to the environment.



地址：江苏省江阴市澄江东路3号
网址：www.andrewen.com

电话：0510-86199978 86199979
www.andrewen.net

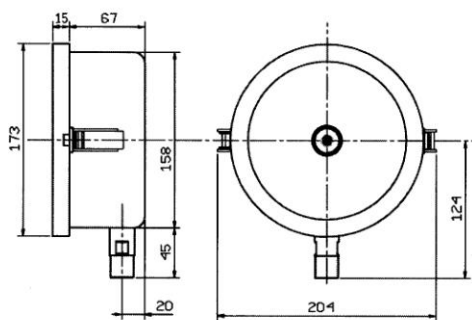
安德鲁信重工江苏有限公司

传真：0510-86199980
邮箱：info@andrewen

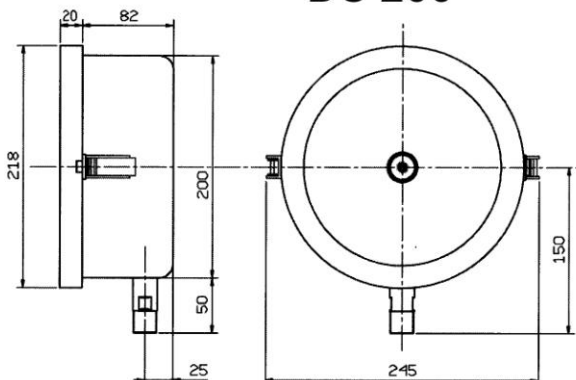
规格

底部连接

DS 160

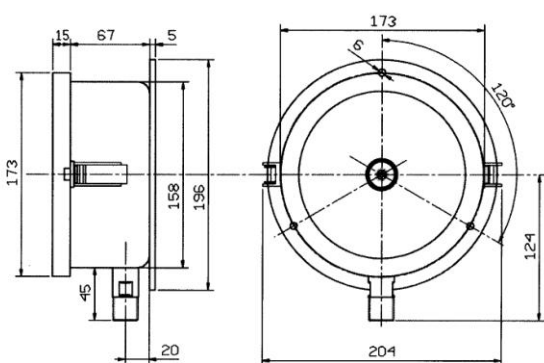


DS 200

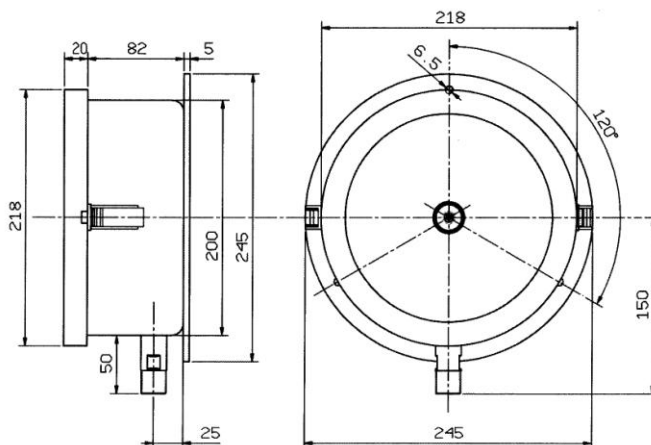


法兰盘底部连接

DS 160

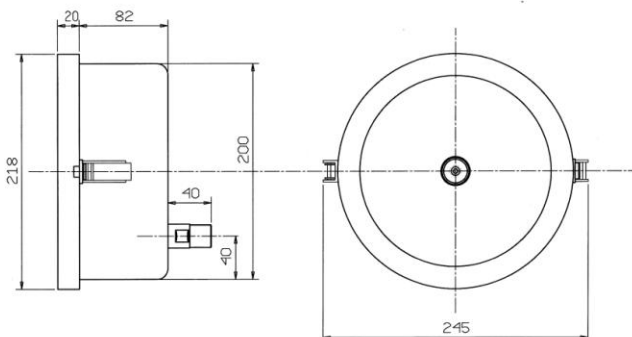


DS 200



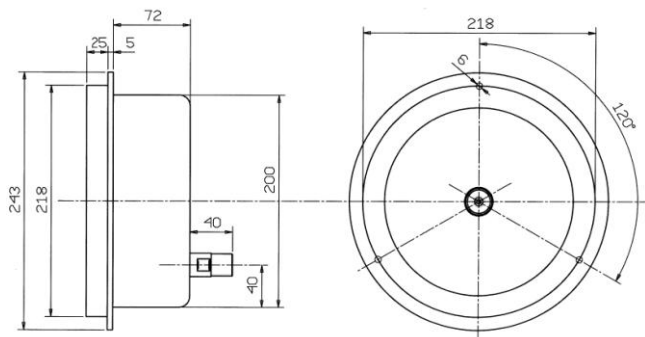
底部连接

DS 200



底部连接带前置法兰盘

DS 200



单位 mm



安德鲁信重工江苏有限公司

地址：江苏省江阴市澄江东路3号

电话：0510-86199978 86199979

传真：0510-86199980

网址：www.andrewen.com

www.andrewen.net

邮箱：info@andrewen

技术参数

测量元件

Bourdon spring 316 st.st.

压力刻度

Pressure Scales are available from 1,6 up to 1600 Bar, available PSI scales

工艺连接

Bottom or back 1/2 BSP M., available NPT - 1/2 BSP F connection.

Wetted parts 316 st.st.

测量精度

+/- 1% of the full scale value

环境温度

-20°C + 50°C

发条

Spring-loaded mechanical, battery with quartz movement

图表

Disc of 183 mm - 125 mm at linear divisions

表玻璃

Glass 3 mm thickness

书写系统

Synthetic fibre pen ink-filled easy to replace with an autonomous writing of 150 m

外壳和密封圈

304 st.st. high weatherproof and industrial smokes-resistant

连接类型

Bottom, bottom with back flange

Back, back with front flange (DN 200 only)



安德鲁信重工江苏有限公司

地址：江苏省江阴市澄江东路3号 电话：0510-86199978 86199979 传真：0510-86199980
网址：www.andrewen.com www.andrewen.net 邮箱：info@andrewen

可用发条

Battery 7 days (168 h)
Battery 24 hours
Mechanical 31 days (744 h)
Mechanical 7 days (168 h)
Mechanical 48 h
Mechanical 24 h
Mechanical 12 h
Mechanical 6 h
Mechanical 2 h
Mechanical 1 h

标准测量范围

PRESSURE BAR			
0-1	0-10	0-100	0-600 *
0-1,6	0-16	0-160	0-1000 *
0-2,5	0-25	0-250	0-1600 *
0-4	0-40	0-300	
0-6	0-60	0-400	

(*) Available DS 200 only

PRESSURE PSI			
0-60	0-400	0-1600	0-6000 *
0-100	0-500	0-2000	0-10000 *
0-200	0-600	0-3000	0-15000 *

(*) Available DS 200 only



地址：江苏省江阴市澄江东路3号
网址：www.andrewen.com

电话：0510-86199978 86199979
www.andrewen.net

安德鲁信重工江苏有限公司

传真：0510-86199980
邮箱：info@andrewen