

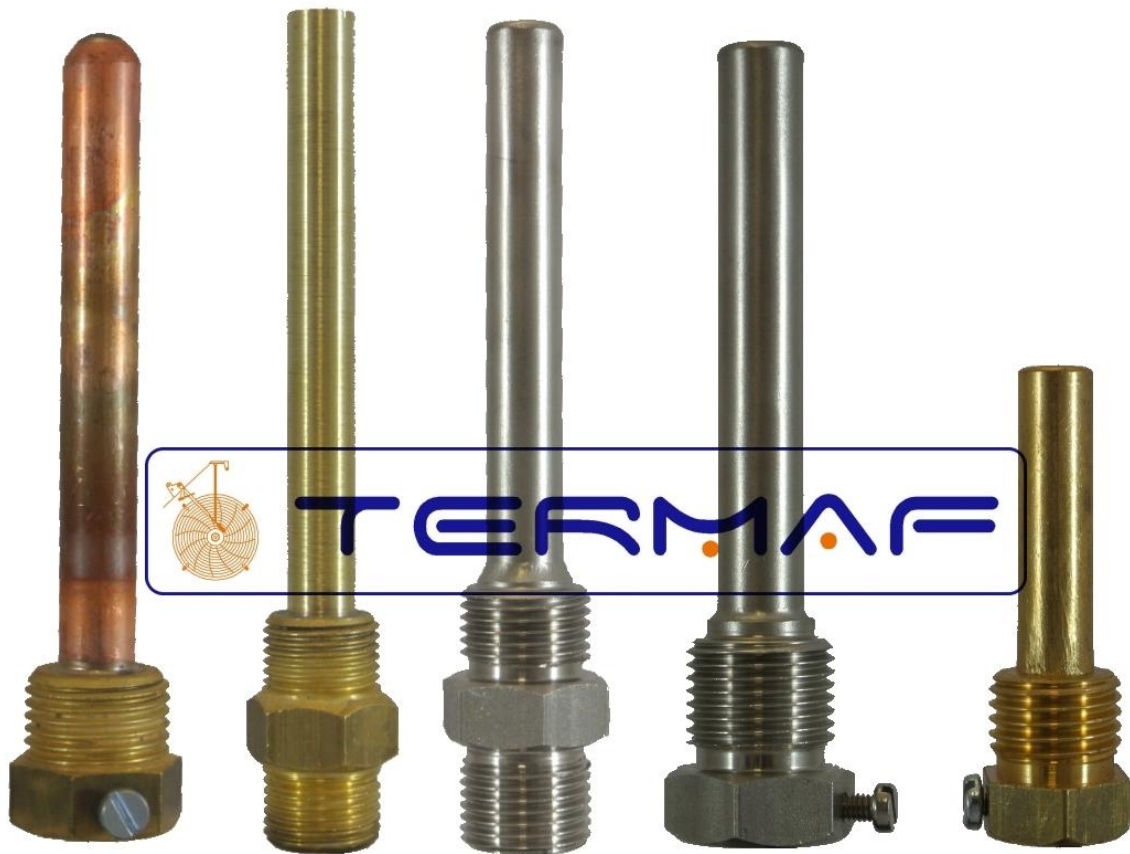
# 温度计套管

## 概述

They are recommended for separating the process fluid from the external environment, permitting the removal of the thermometer for replacement or calibration.

They are suitable for being used in the vessels construction, tubes and heating systems.

Wide range of connection variants and tube diameter on request. We produce thermowells designs.



安德鲁信重工江苏有限公司

地址：江苏省江阴市澄江东路3号 电话：0510-86199978 86199979 传真：0510-86199980  
网址：www.andrewen.com www.andrewen.net 邮箱：info@andrewen

## 技术参数 thermowell type A

Type A1: connection and drawn tube in AISI 316 st.st.

Type A2: connection and drawn tube in AISI 304 st.st.

Type A3: connection and drawn tube in chrome plated steel

Type A4: brass connection and copper alloy tube

Type A5: connection and tube in brass

Type A6: connection and tube in bar stock brass

TIG welded thermowells Type A1-A2-A3

Silver alloy welded thermowells Type A4-A5

The max. process temperature for thermowells Type A1-A2-A3-A6 is of 500°C

The max. process temperature for thermowells Type A4 is of 160°C

The max. process temperature for thermowells Type A5 is of 200°C

The max. operating pressure for thermowells Type A1-A2-A3-A6 is of 25 bar

The max. operating pressure for thermowells Type A4-A5 is of 6 bar

Standard lengths for Type A1-A2-A5

(dimensions L in mm) :

50-60-100-150-200-250-300-400-500 Standard lengths for

Type A3

(dimensions L in mm) : 50-60-75-100-150-200

Standard length for Type A4

(dimensions L in mm) :

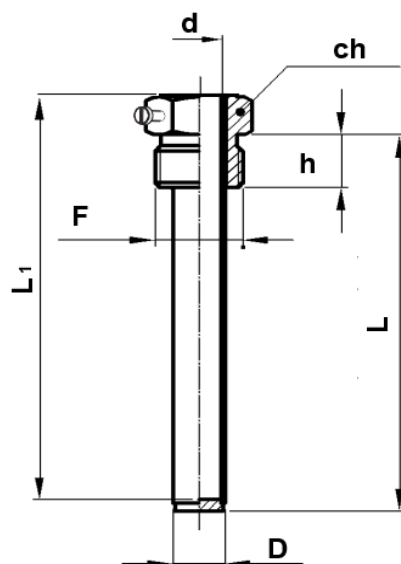
50-60-100-150-200-250-300-400-500 Standard lengths for THERMOWELL TYPE A

type A6

Dimensions of screw (mm) : 40-50-100

单位：毫米

TYPE	L1	F	D	d	h	ch
A1	L + 7	1/2 BSP	12	10	18	24
A2	L + 7	1/2 BSP	12	10	18	24
A3	L + 8	1/2 BSP	12	10	18	24
A4	L + 9	1/2 BSP	11	9.5	12.5	22
A5	L + 8	1/2 BSP	12	10	18	24
A6	L + 9	1/2 BSP	12	9.5	12.5	22



Available NPT connections ( A1-A2-A3-A5 only)



安德鲁信重工江苏有限公司

地址：江苏省江阴市澄江东路3号 电话：0510-86199978 86199979 传真：0510-86199980

网址：www.andrewen.com

www.andrewen.net

邮箱：info@andrewen

## 技术参数 thermowell Type B

Type B1: connection and drawn tube in AISI 316 st.st.

Type B2: connection and drawn tube in AISI 304 st.st.

Type B3: connection and drawn tube in chrome plated steel

Type B4: connection and drawn tube in brass

TIG welded thermowells Type B1-B2-B3

Silver alloy welded thermowells Type B4

The max. process temperature for thermowells Type B1-B2-B3 is of 500°C

The max. process temperature for thermowells Type B4 is of 200°C

The max. operating pressure for thermowells Type B1-B2-B3 is of 25 bar

The max. operating pressure for thermowells Type B4 is of 6 bar

Standard lengths for Type B1-B2-B3-B4

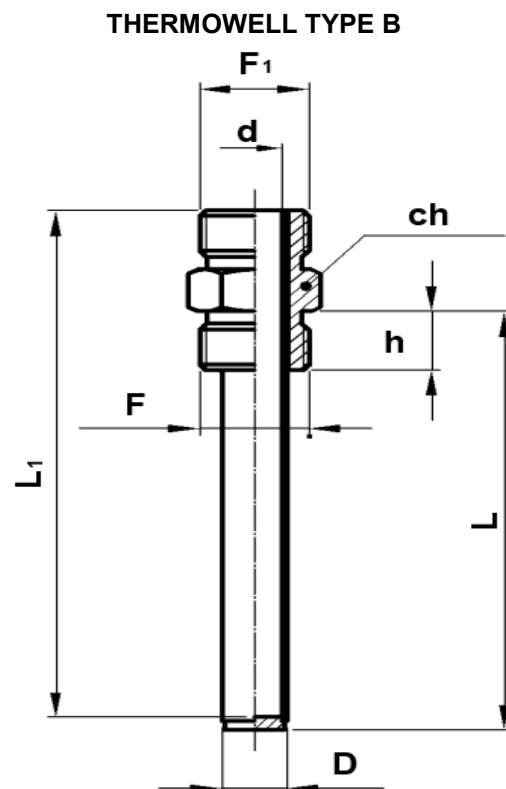
(dimensions L in mm) :

50-100-150-200-250-300-400-500

0 单位: 毫米

TYPE	L <sub>1</sub>	F	F <sub>1</sub>	D	d	h	ch
B1	L + 25	1/2 BSP	1/2 BSP	12 / 14	10 / 12	16.5	24
B2	L + 25	1/2 BSP	1/2 BSP	12 / 14	10 / 12	16.5	24
B3	L + 25	1/2 BSP	1/2 BSP	12 / 14	10 / 12	16.5	24
B4	L + 25	1/2 BSP	1/2 BSP	12 / 14	10 / 12	16.5	24

Available process connection NPT ( F )



安德鲁信重工江苏有限公司

地址: 江苏省江阴市澄江东路3号 电话: 0510-86199978 86199979 传真: 0510-86199980  
 网址: www.andrewen.com www.andrewen.net 邮箱: info@andrewen

## 技术参数 thermowell Type C

Type C1: connection and drawn tube in AISI 316 st.st.

Type C2: connection and drawn tube in AISI 304 st.st.

Type C3: connection and drawn tube in chrome plated steel

Type C4: connection and drawn tube in brass

TIG welded thermowells Type C1-C2-C3

Silver alloy welded thermowells Type C4

The max. process temperature for thermowells Type C1-C2-C3 is of 500°C

The max. process temperature for thermowells Type C4 is of 200°C

The max. operating pressure for thermowells Type C1-C2-C3 is of 25 bar

The max. operating pressure for thermowells Type C4 is of 6 bar

Standard lengths for Type C1-C2-C3-C4

(dimensions L in mm) :

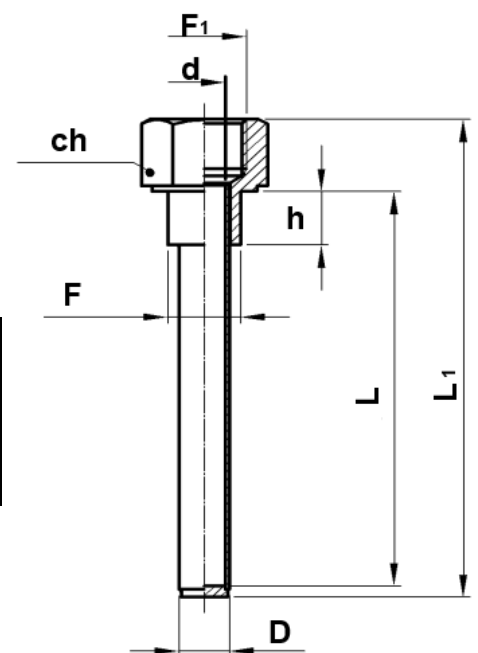
50-100-150-200-250-300-400-500

单位：毫米

TYPE	L <sub>1</sub>	F	F <sub>1</sub>	D	d	h	ch
C1	L + 22	1/2 BSP	1/2 BSP	12 / 14	10 / 12	20	27
C2	L + 22	1/2 BSP	1/2 BSP	12 / 14	10 / 12	20	27
C3	L + 22	1/2 BSP	1/2 BSP	12 / 14	10 / 12	20	27
C4	L + 22	1/2 BSP	1/2 BSP	12 / 14	10 / 12	20	27

Available process connection NPT( F)

THERMOWELL TYPE C



安德鲁信重工江苏有限公司

地址：江苏省江阴市澄江东路3号 电话：0510-86199978 86199979 传真：0510-86199980

网址：www.andrewen.com

www.andrewen.net

邮箱：info@andrewen