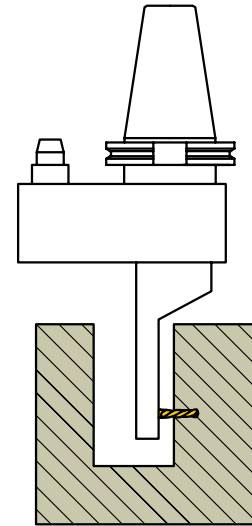




GS-3



GS-11



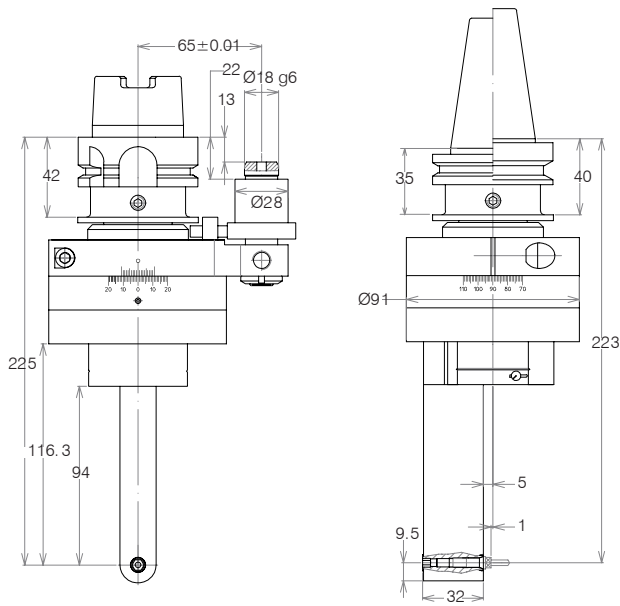
GS

Features

- For drilling, tapping and light milling operations
- For cutting operations inside small bores
- Usable on both CNC and conventional machine tools
- Heat-treated aluminium or steel main body
- Compact and rigid construction
- Coolant feed through stop-bar pin

Merkmale

- Für Bohrungen, Gewindebohren und leichte Fräsbearbeitungen
- Für Bearbeitungen in kleineren Bohrungen
- Verwendbar mit CNC- und herkömmlichen Werkzeugmaschinen
- Hauptkörper aus wärmebehandelter Aluminium- oder Stahllegierung
- Kompakte und rigide Bauform
- Kühlmittelezufuhr durch Anschlagstift

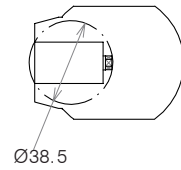


GS-3

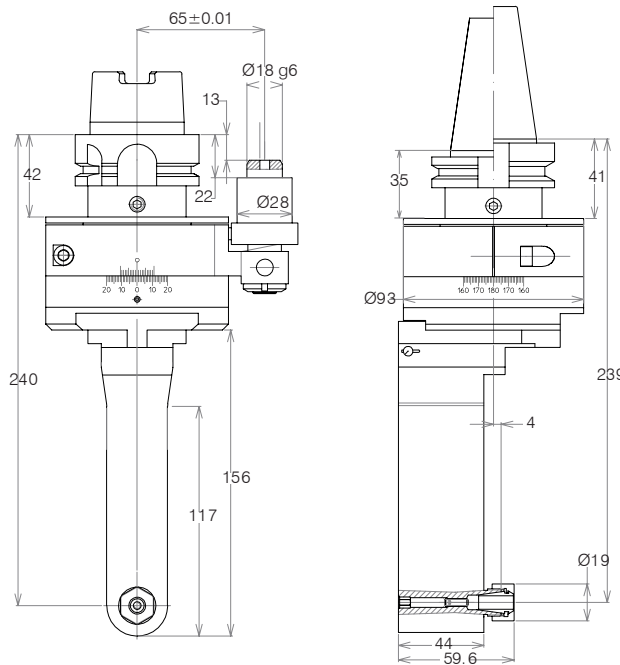
SK40 / BT40 / CAT40 / HSK63

6023E | **8.000 RPM** | **6 Nm**

Schubkraft Thrust	Gewicht Weight	Übersetzung Ratio
100 N	7 kg	1:1



GS

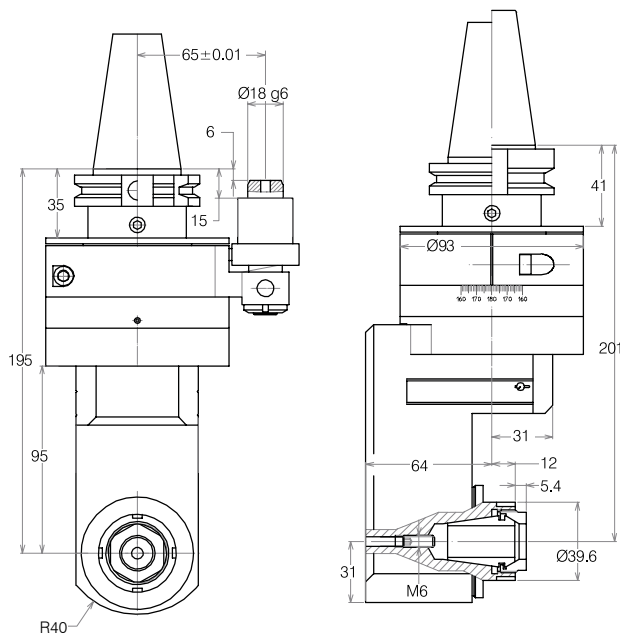
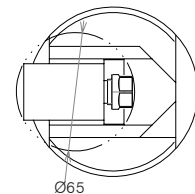


GS-11

SK40 / BT40 / CAT40 / HSK63

ER11 | **6.000 RPM** | **8 Nm**

Schubkraft Thrust	Gewicht Weight	Übersetzung Ratio
220 N	7 kg	1:1

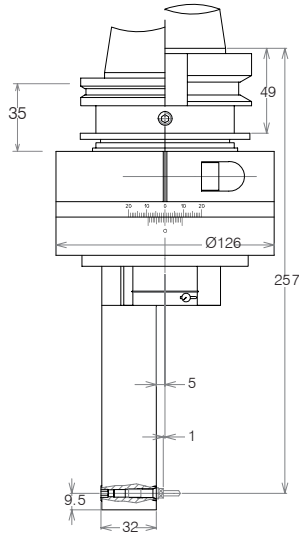
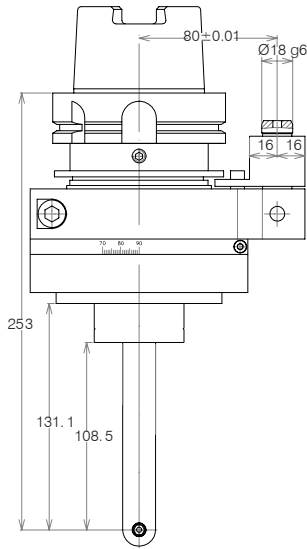


GS-25

SK40 / BT40 / CAT40 / HSK63

ER25 | **6.000 RPM** | **26 Nm**

Schubkraft Thrust	Gewicht Weight	Übersetzung Ratio
230 N	6,5 kg	1:1

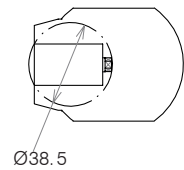


GS-3

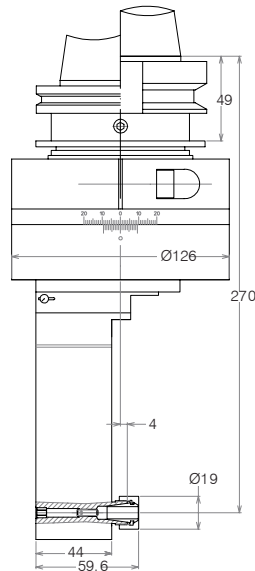
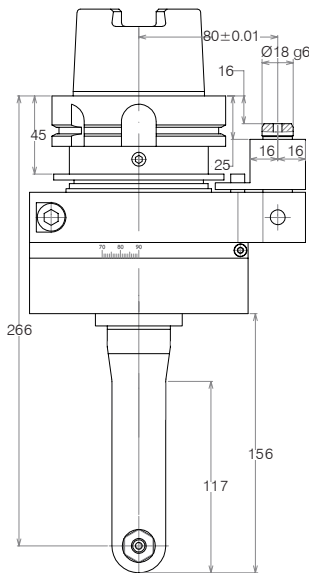
SK50 / BT50 / CAT50 / HSK100

6023E | 8.000 RPM | 6 Nm

Schubkraft Thrust	Gewicht Weight	Übersetzung Ratio
100 N	10,5 kg	1:1



GS

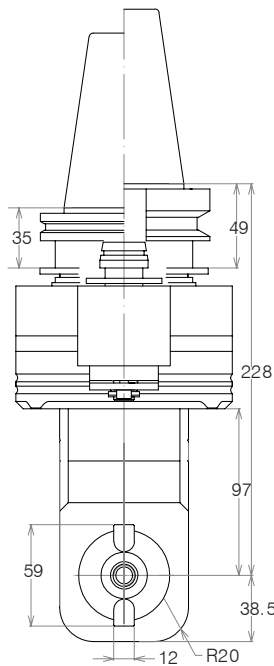
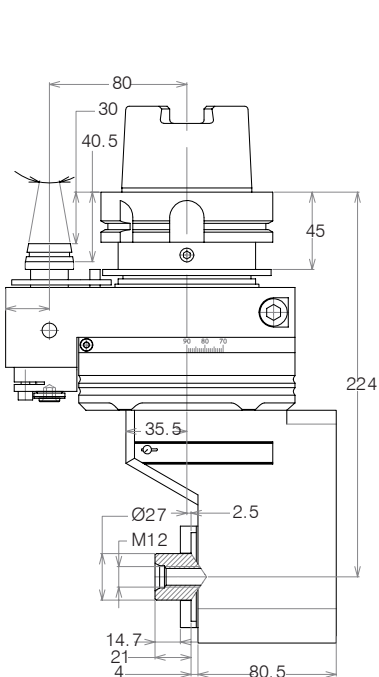
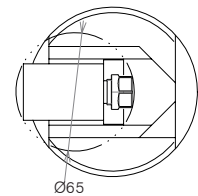


GS11

SK50 / BT50 / CAT50 / HSK100

ER11 | 6.000 RPM

Schubkraft Thrust	Gewicht Weight	Übersetzung Ratio
220 N	10,5 kg	1:1



GS-Q27

SK50 / BT50 / CAT50 / HSK100

3.500 RPM | 40 Nm

Gewicht Weight	Übersetzung Ratio
14 kg	1:1