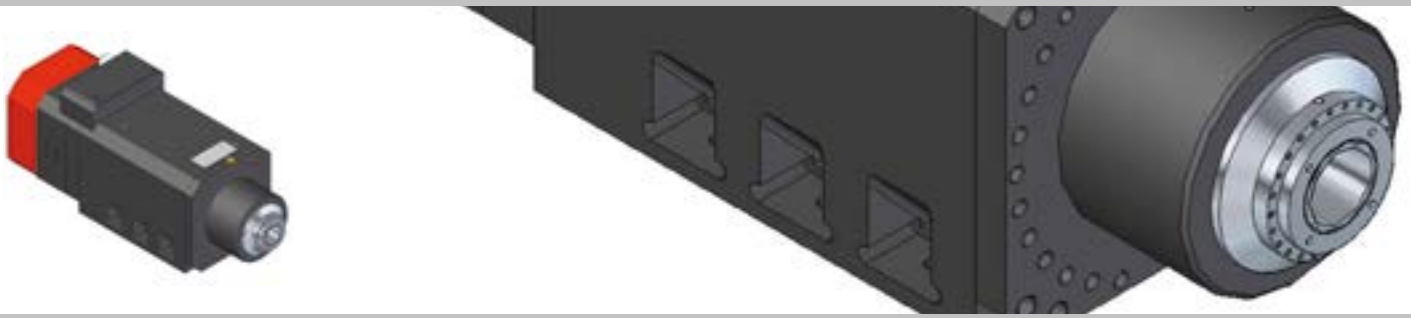
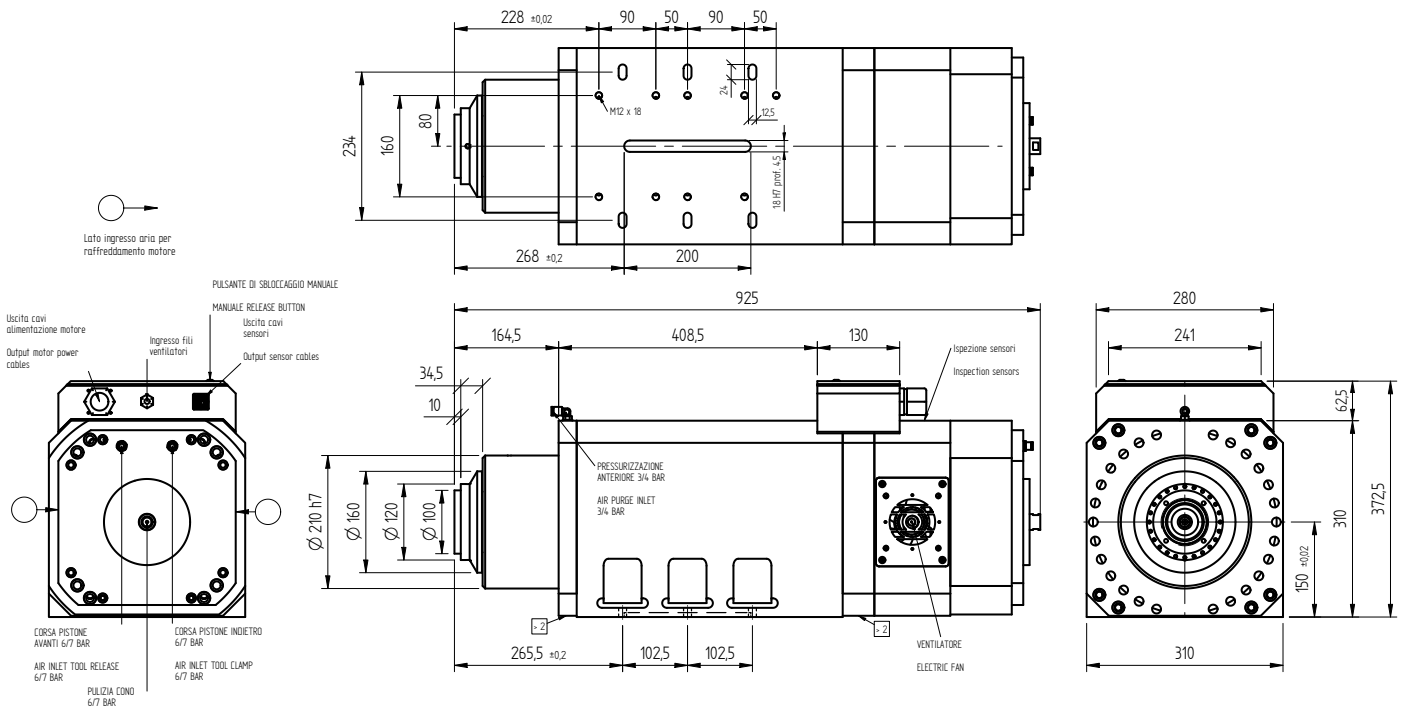


AF 270 CU PL HSK B100



TYPE		VOLTAGE [Volt]	FREQUENCY [Hz]	RPM	DELIVER POWER [Kw]	ABSOR. [Amp]	Cos j	WEIGHT [Kg]
AF 270 25/2 CU PL HSK B100	Electric Fan	400/690	50	3000 (2 poli)	42,0	72,7/42,0	0,92	250



- 1 - Contagiri / Two impulses for revolution - RPM
- 2 - Pistone avanti / Air inlet tool release - AP
- 3 - Pistone indietro / Air inlet tool clamp - PI
- 4 - Pistone indietro utens. agganciato / Air inlet tool clamp in work position - LAV
- 5 - Alimentazione / Card feed +24 - M+
- 6 - Alimentazione / Card feed 0 - B-
- 7 - Albero fermo - Locked spindle - STP



TIPO	A	B
230/2 - 2 poli	885	368,5
235/2 - 4 poli	890	373,5
200/6 - 6 poli	855	338,5