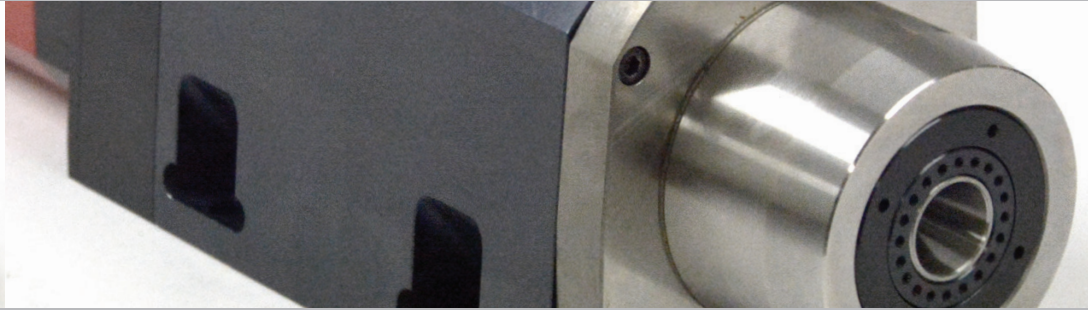
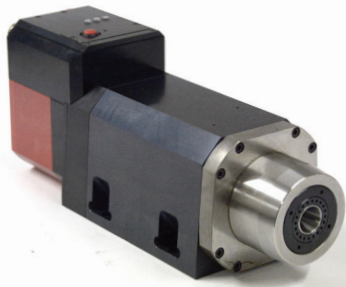




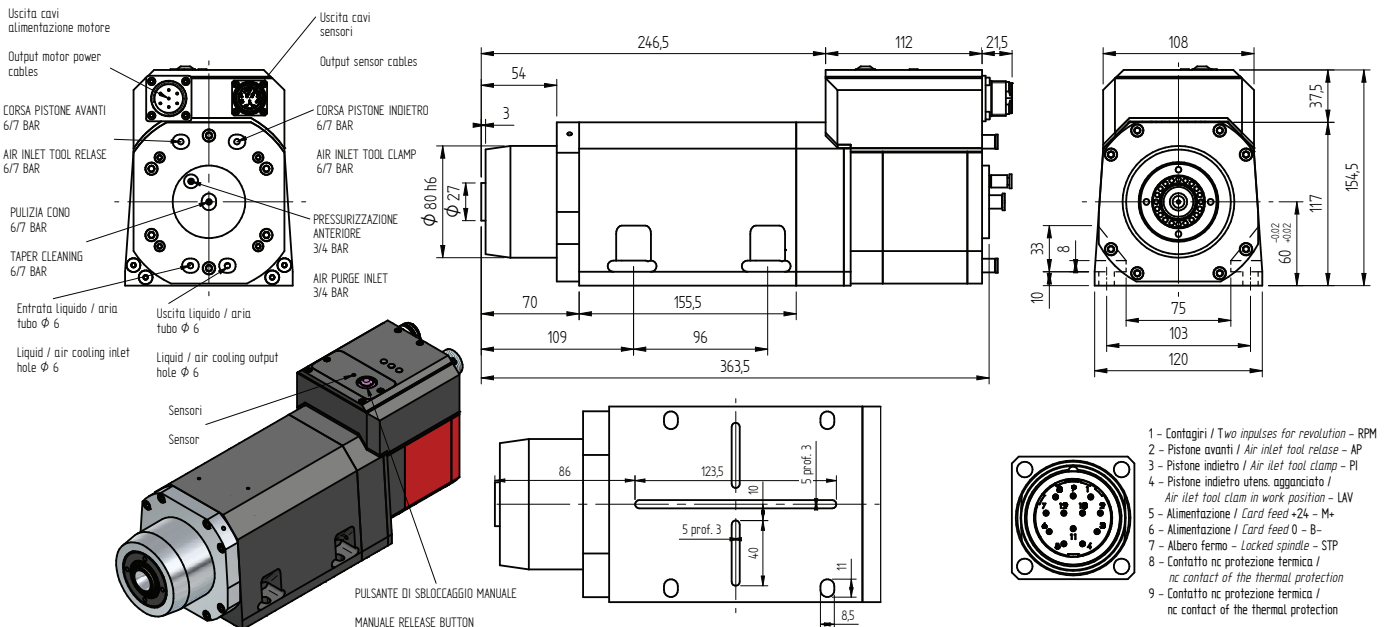
High speed precision spindles

SCHEDA TECNICA

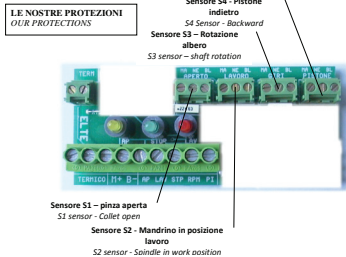
AF 90 CU 10/2 ISO 20



MODELLO	TENSIONE [Volt]	FREQUENZA [Hz]	GIRI	POT. RESA [Kw]	ASSORB. [Amp]	Cos j	PESO [Kg]
AF90 10/2 CU ISO 20 aria compressa	350	300 - 400	18000 - 24000	3,6	8,6	0,84	16
ISO 20 liquido	350	300 - 400	18000 - 24000	4.5	10.4	0,84	16



- 1 - Contagiri / Two impulses for revolution - RPM
- 2 - Pistone avanti / Air inlet tool release - AP
- 3 - Pistone indietro / Air inlet tool clamp - PI
- 4 - Pistone indietro utens. agganciato / Air inlet tool clam in work position - LAV
- 5 - Alimentazione / Card feed +24 - M+
- 6 - Alimentazione / Card feed 0 - B-
- 7 - Albero fermo - Lacked spindle - STP
- 8 - Contatto nc protezione termica / nc contact of the thermal protection
- 9 - Contatto nc protezione termica / nc contact of the thermal protection



- A - Fase motore / Motor's phase - U
- B - Fase motor / Motor's phase - V
- C - Fase motore / Motor's phase - W
- D - Filo di massa / Earth wire PE
- E - Libero / free
- F - Libero / free
- G - Libero / free

